

# **Section 5 Data**

**Submitted to  
The Louisiana Board of Regents  
In Partial fulfillment of the requirements of Act 741  
Louisiana GRAD Act**

**Bossier Parish Community College  
Louisiana Community and Technical College System**

**Spring 2011**

**a. Number of students by classification**

- **Headcount, undergraduate students and graduate/professional school students**

Undergraduate headcount	6,473
-------------------------	-------

- **Annual FTE (full-time equivalent) undergraduate and graduate/professional school students**

Undergraduate FTE	4,667
-------------------	-------

**b. Number of instructional staff members**

- **Number and FTE instructional faculty**

Total Headcount Faculty	266
FTE Faculty	133

- c. **Average class student-to-instructor ratio**
- **Average undergraduate class size at the institution**

Average undergraduate class size	22
----------------------------------	----

**d. Average number of students per instructor**

- **Ratio of FTE students to FTE instructional faculty**

Average number of students per instructor	35
---	----

- e. **Number of non-instructional staff members in academic colleges and departments**
- **Number and FTE non-instructional staff members by academic college (or school, if that is the highest level of academic organization for some units)**

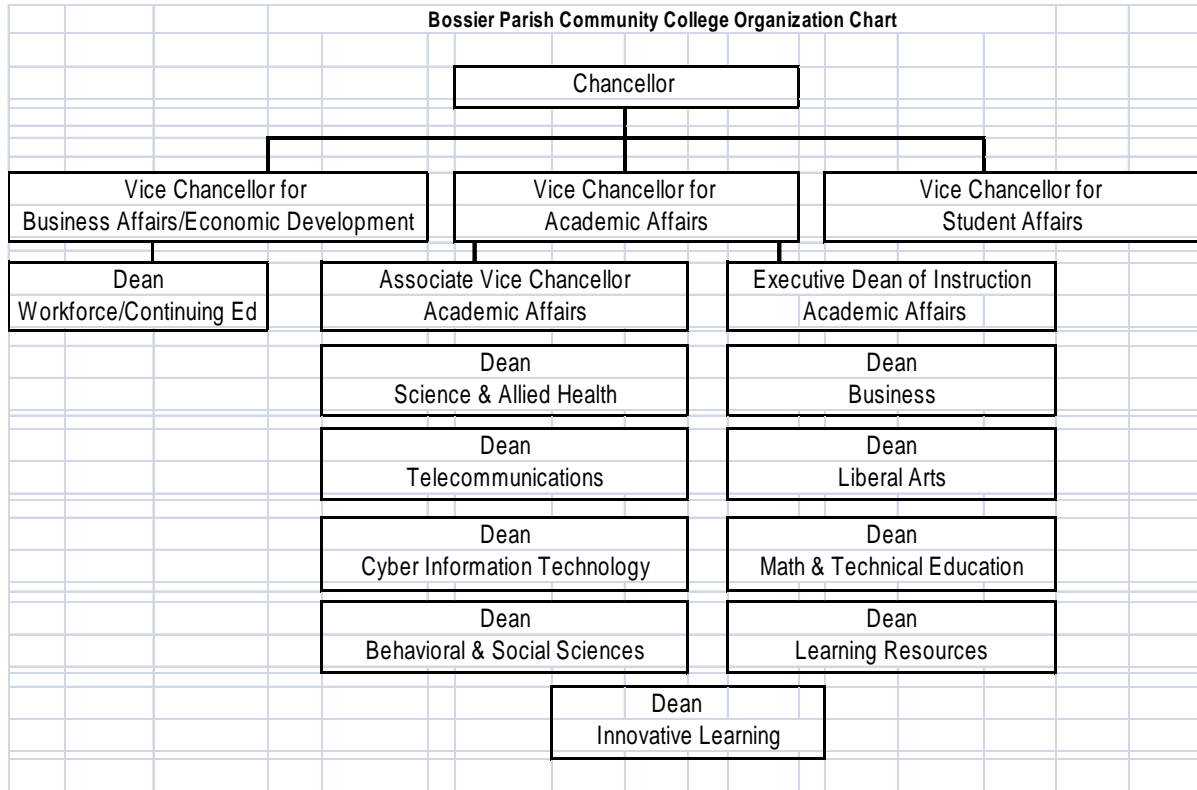
Number of non-instructional staff	FTE non-instructional staff
11	11

**f. Number and FTE of staff in administrative areas**

- **Number and FTE of staff as reported in areas other than the academic colleges/schools, reported by division**

Number of staff	FTE staff
12	12

- g. Organization chart containing all departments and personnel in the institution down to the second level of the organization below the president, chancellor, or equivalent position (as of Fall 2010)





**h. Salaries of all personnel identified in subparagraph (g) above and the date, amount, and type of all increases in salary received since June 30, 2008**

- **A chart listing the title, fall 2010 Total Base Salary, and a history of any salary changes (within the same position) since June 30, 2008.**

**Bossier Parish Community College Salaries for Organizational Chart**

	<b>Current Salary</b>	<b>As of 6/30/08</b>	<b>Merit 7/1/08</b>	<b>Other amt</b>	<b>Reason</b>
Chancellor	\$167,000	\$141,874	\$8,512	\$16,614	7/1/2009 New Chancellor hiring rate
Vice Chancellor Student Affairs	\$102,514	\$98,571	\$3,943	\$0	n/a
Vice Chancellor for Academic Affairs	\$111,132	\$106,858	\$4,274	\$0	n/a
Associate Vice Chancellor of Academic Affairs	\$92,700	\$85,000	\$1,700	\$6,000	8/15/2009 Additional Duties
Executive Dean Instruction/ Academic Planning	\$82,526	\$74,544	\$2,982	\$5,000	1/12/2009 Additional Duties
Vice Chancellor Business Affairs & Economic Development	\$121,874	\$117,187	\$4,687	\$0	n/a
Dean Workforce & Continuing Ed	\$83,227	\$71,791	\$1,436	\$10,000	11/30/2009 Additional Duties
Dean Science & Allied Health	\$78,318	\$76,782	\$1,536	\$0	
Dean Business	\$65,000	\$45,360	\$907	\$18,733	7/1/2010 New baseline Dean Salary 7/19/2010 Additional Duties
Dean Telecommunications	\$80,164	\$78,592	\$1,572	\$0	n/a
Dean Liberal Arts	\$55,000	\$49,440	\$989	\$4,571	7/1/2010 New baseline Dean Salary
Dean Cyber Information Technology**	\$69,000	\$0	\$0.00	\$69,000	8/14/2008 position created
Dean Math & Technical Education*	\$60,115	\$58,936	\$1,179	\$0	n/a
Dean Behavioral & Social Sciences	\$55,000	\$45,360	\$907	\$8,733	7/1/2010 New baseline Dean Salary
Dean Learning Resources	\$78,350	\$72,108	\$1,442	\$4,800	10/1/2009 Additional Duties
Dean Innovative Learning	\$83,271	\$71,834	\$1,437	\$10,000	12/1/2009 Additional Duties

\*Position to be removed FY2010-11.

\*\*Position will become Dean of Technology, Engineering, and Math FY 2010-11.