

# **2010-11 Organizational Data**

**Submitted to  
The Louisiana Board of Regents  
In Partial fulfillment of the requirements of Act 741  
Louisiana GRAD Act**

**Baton Rouge Community College  
Louisiana Community and Technical College System**

## **Performance Objective 5 – Reporting Requirements**

### **a. Number of students by classification**

- **Headcount, undergraduate students and graduate/professional school students**

*Source: Enrollment data submitted by the institutions to the Statewide Student Profile System (SSPS), Board of Regents summary report SSPSLOAD, Fall 2010*

Undergraduate headcount	8,332
Graduate headcount	0
Total headcount	8,332

- **Annual FTE (full-time equivalent) undergraduate and graduate/professional school students**

*Source: Credit hour data submitted by the institutions to the Student Credit Hour (SCH) Reporting System, Board of Regents summary report SCHFTEP2K, AY 2009-2010*

Undergraduate FTE	5,708.4
Graduate FTE	0
Total FTE	5,708.4

### **b. Number of instructional staff members**

- **Number and FTE instructional faculty**

*Source: Employee data submitted by the institutions to the Employee Salary (EMPSAL) Data System, file submitted to Board of Regents in fall 2010. Instructional faculty is determined by Primary Function = "IN" (Instruction) and EEO category = "2" (Faculty). FTE is determined utilizing the Campus Percent Effort (CPE) field.*

Total Headcount Faculty	280
FTE Faculty	209

### **c. Average class student-to-instructor ratio**

- **Average undergraduate class size at the institution**

*Source: Credit hour data submitted to the Student Credit Hour (SCH) Reporting System – 2009-2010 (Report: SCHTXRPT2K)*

Undergraduate headcount enrollment	58,020
Total number of sections in which the course number is less than or equal to a senior undergraduate level	2,246
Average undergraduate class size	25.8

**d. Average number of students per instructor**

- **Ratio of FTE students to FTE instructional faculty**

*Source: Student Credit Hour (SCH) Reporting System and Employee Salary (EMPSAL) Data System, Board of Regents*

Total FTE enrollment	5,708.4
FTE instructional faculty	209
Ratio of FTE students to FTE faculty	27.3

**e. Number of non-instructional staff members in academic colleges and departments**

- **Number and FTE non-instructional staff members by academic college (or school, if that is the highest level of academic organization for some units)**

*Source: Employee data submitted to the Employee Salary (EMPSAL) Data System, submitted to Board of Regents in fall 2010, EEO category = "1" (Executive, Administrative, Managerial) or "3" (Other professionals, support/service) and a Primary Function not equal to "IN" (Instruction). This item reports staff members that are an integral part of an academic college or equivalent unit.*

Name of College/School	Number of non-instructional staff*	FTE non-instructional staff
Baton Rouge Community College	53	53

Notes: BRCC only has one college/school

\*This figure ONLY includes: EEO category = "1" (Executive, Administrative, Managerial) employee data submitted to the Employee Salary (EMPSAL) Data System, submitted to Board of Regents in fall 2010

**f. Number and FTE of staff in administrative areas**

- **Number and FTE of staff as reported in areas other than the academic colleges/schools, reported by division**

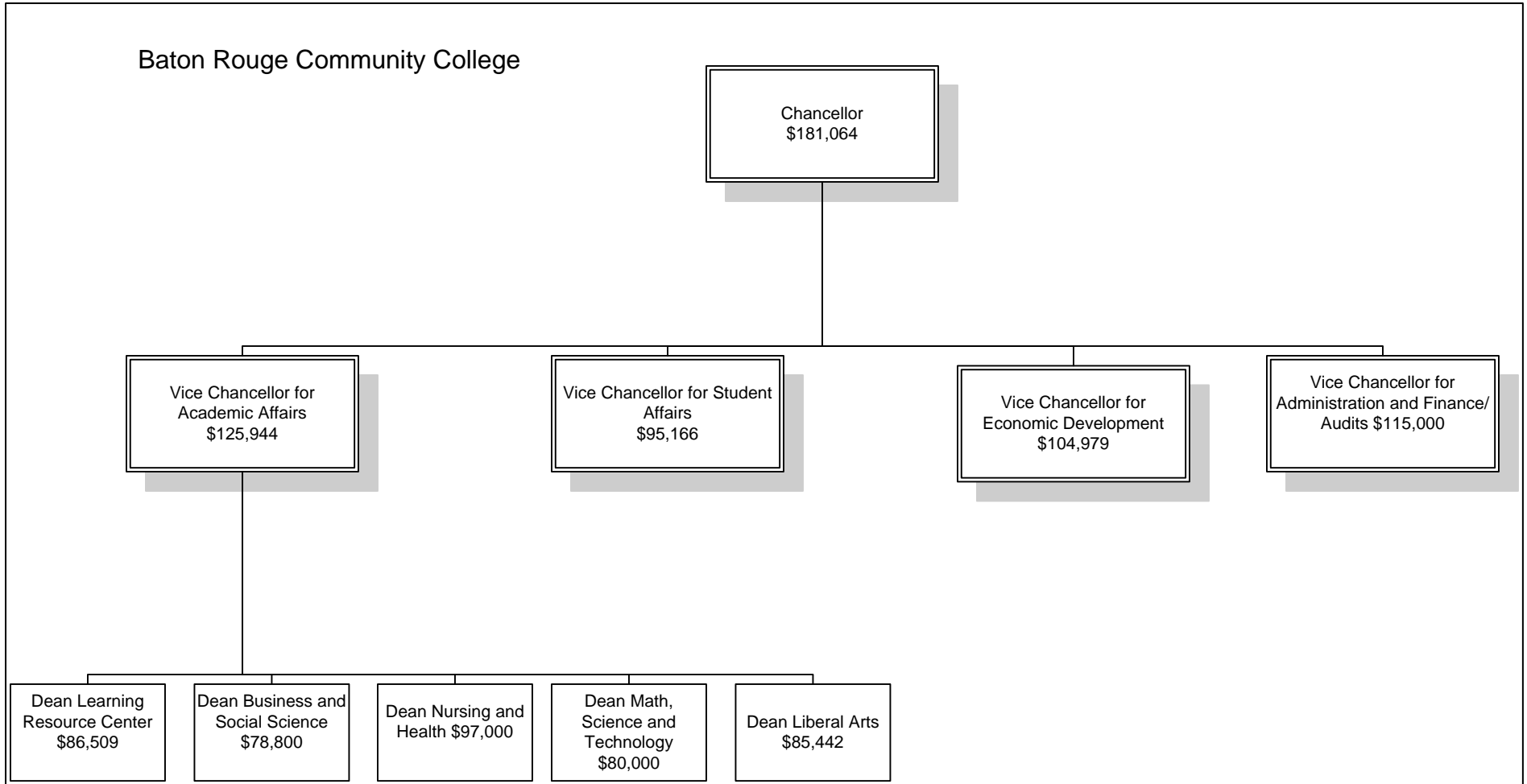
*Source: Employee data submitted to the Employee Salary (EMPSAL) Data System, submitted to Board of Regents in fall 2010, EEO category = "1" (Executive, Administrative, Managerial) or "3" (Other professionals, support/service) and a Primary Function not equal to "IN" (Instruction). This item reports staff members that are not an integral part of an academic college or equivalent unit, e.g. enrollment management, sponsored research, technology support, academic advising, and library services.*

Name of Division	Number of staff*	FTE staff*
BRCC	10	10

**\*Staff constitutes only top 3 hierarchical levels of personnel**



# 5G. Org Chart



**h. Salaries of all personnel identified in subparagraph (g) above and the date, amount, and type of all increases in salary received since June 30, 2008**

- **A chart listing the title, fall 2009 Total Base Salary, and a history of any salary changes (within the same position) since June 30, 2008.**

<b>Position Title</b>	<b>Fall 2009 Base Salary</b>	<b>History of salary change since 6/30/2008</b>
Chancellor	181,064	Inc from 172,442 <b>(MERIT)</b>
V/C Academic Affairs	125,944	Inc from 121,100 <b>(MERIT)</b>
V/C Student Affairs	95,166	Inc from 93,300 <b>(MERIT)</b>
V/C Economic Development	104,979	Inc from 102,921 <b>(MERIT)</b>
V/C Admin & Finance	115,000	Dec from 120,812 <b>New Person in Position</b>
Dean LRC	86,509	Inc from 85,182 <b>(MERIT)</b>
Dean Bus and Soc Science	78,800	Inc from 73,500 <b>New Person In Position</b>
Dean Nursing	97,000	Inc from 85,170 <b>New Person In Position</b>
Dean Math, Science, Tech	80,000	Dec from 81,952 <b>New Person in Position</b>
Dean Liberal Arts	85,442	Inc from 82,156 <b>(MERIT)</b>