

Organizational Data

**Submitted to
The Louisiana Board of Regents
In Partial fulfillment of the requirements of Act 741
Louisiana GRAD Act**

**L. E. Fletcher Technical Community College
Louisiana Community and Technical College System**

April 1, 2011

a. Number of students by classification

- **Headcount, undergraduate students and graduate/professional school students**

Undergraduate headcount	1,843
-------------------------	-------

- **Annual FTE (full-time equivalent) undergraduate and graduate/professional school students**

Undergraduate FTE	1,225.2
-------------------	---------

- b. Number of instructional staff members**
- Number and FTE instructional faculty**

Total Headcount Faculty	77
FTE Faculty	49.9

- c. **Average class student-to-instructor ratio**
- **Average undergraduate class size at the institution**

Average undergraduate class size	14.7
----------------------------------	------

d. Average number of students per instructor

- **Ratio of FTE students to FTE instructional faculty**

Average number of students per instructor	24.6
---	------

- e. **Number of non-instructional staff members in academic colleges and departments**
- **Number and FTE non-instructional staff members by academic college (or school, if that is the highest level of academic organization for some units)**

Number of non-instructional staff	FTE non-instructional staff
4	4

The 4 positions fitting this definition and reconciling to the Organization Chart are:

- 1) **Dean of Arts & Sciences**
- 2) **Dean of Nursing and Allied Health**
- 3) **Dean of Technical Education**
- 4) **Director of the Louisiana Marine and Petroleum Institute**

f. **Number and FTE of staff in administrative areas**

- **Number and FTE of staff as reported in areas other than the academic colleges/schools, reported by division**

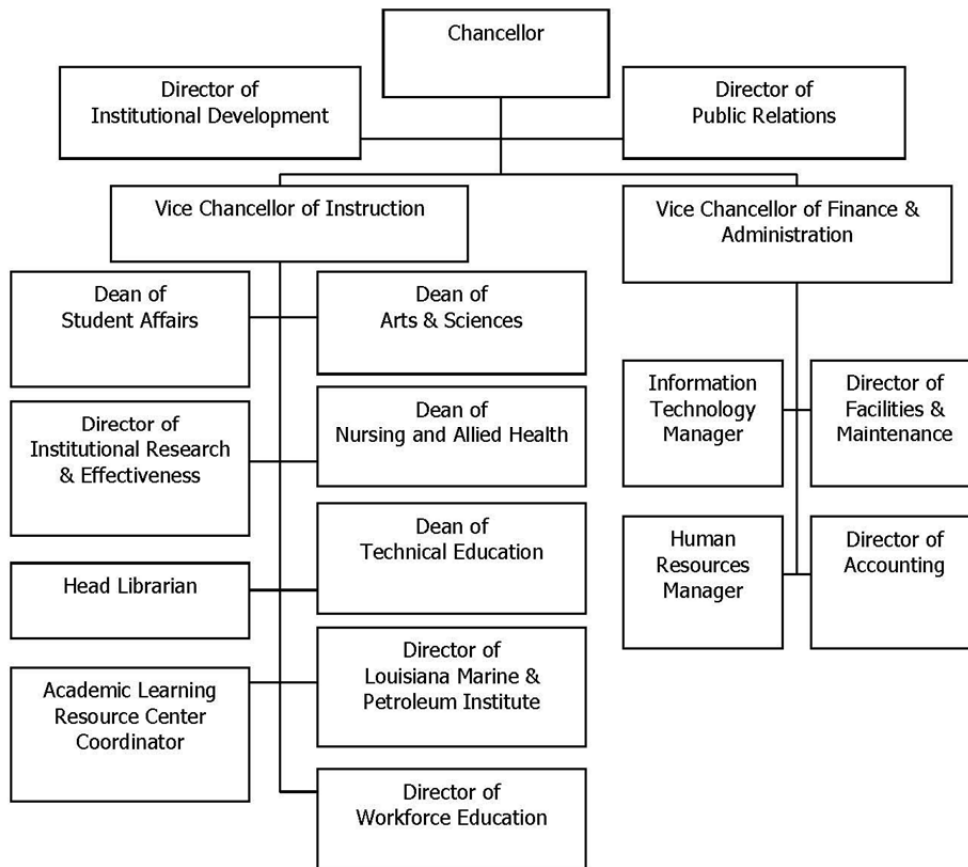
Number of staff	FTE staff
14	14

The 14 positions fitting this definition and reconciling to the Organization Chart are:

- 1) Chancellor
- 2) Vice Chancellor for Instruction
- 3) Vice Chancellor for Finance and Administration
- 4) Director of Institutional Development
- 5) Director of Public Relations
- 6) Dean of Student Affairs
- 7) Director of Institutional Research and Effectiveness
- 8) Head Librarian
- 9) Academic Learning Resource Center Coordinator
- 10) Director of Workforce Education
- 11) Information Technology Manager
- 12) Director of Facilities and Maintenance
- 13) Human Resources Manager
- 14) Director of Accounting

- g. Organization chart containing all departments and personnel in the institution down to the second level of the organization below the president, chancellor, or equivalent position (as of Fall 2010)

**Fletcher Technical Community College Organizational Chart
2009-2010**



h. Salaries of all personnel identified in subparagraph (g) above and the date, amount, and type of all increases in salary received since June 30, 2008

- **A chart listing the title, fall 2010 Total Base Salary, and a history of any salary changes (within the same position) since June 30, 2008.**

Position Title	Fall 2010 Base Salary	History of salary change since 6/30/2008
Chancellor	\$137,223.06	\$0
Vice Chancellor for Instruction	\$96,555.16	\$0
Vice Chancellor for Finance & Administration	\$93,000.18	\$0
Director of Institutional Development	\$60,899.02	\$0
Director of Public Relations	\$54,425.02	\$0
Dean of Student Affairs	\$72,000.24	\$0
Director of Institutional Research & Effectiveness	\$63,000.08	\$0
Head Librarian	\$53,437.28	\$0
Academic Learning Resource Center Coordinator	\$39,019.50	\$0
Dean of Arts & Sciences	\$62,000.12	\$0
Dean of Nursing & Allied Health	Vacant	\$0
Dean of Technical Education	\$62,400.26	\$0
Director of Louisiana Marine and Petroleum Institute	\$65,000.00	\$0
Director of Workforce Education	\$51,213.76	\$0
Information Technology Manager	\$48,880.26	\$0
Director of Facilities & Maintenance	\$72,250.62	\$0
Human Resources Manager	\$52,478.40	\$0
Director of Accounting	\$58,760.00	\$0