

Organizational Data

**Submitted to
the Board of Supervisors of the
University of Louisiana System and
the Louisiana Board of Regents**

**In partial fulfillment of the requirements of Act 741
Louisiana GRAD Act**

**Louisiana Tech University
University of Louisiana System**

March 15, 2011

a. Number of students by classification

- **Headcount, undergraduate students and graduate/professional school students**

Source: Enrollment data submitted by the institutions to the Statewide Student Profile System (SSPS), Board of Regents summary report SSPSLOAD , Fall 2010. This data was submitted to BoR staff on 2/8/11 but not verified.

Undergraduate headcount	8978
Graduate headcount	2765
Total headcount	11743

- **Annual FTE (full-time equivalent) undergraduate and graduate/professional school students**

Source: 2010-2011 Budget Request data submitted to Board of Regents as per SCHBRCPRT.

Undergraduate FTE	7678.0
Graduate FTE	1326.3
Total FTE	9004.4

b. Number of instructional staff members

- **Number and FTE instructional faculty**

Source: Employee data submitted by the institutions to the Employee Salary (EMPSAL) Data System, file submitted to Board of Regents in fall 2010. Instructional faculty is determined by Primary Function = "IN" (Instruction) and EEO category = "2" (Faculty). FTE is determined utilizing the Campus Percent Effort (CPE) field.

Total Headcount Faculty	474 (374 FT + 100 PT)
FTE Faculty	393.65

c. Average class student-to-instructor ratio

- **Average undergraduate class size at the institution**

Source: Credit hour data submitted to the Student Credit Hour (SCH) Reporting System and SPSS, Board of Regents, Fall 2010. This data was submitted to BoR staff on 10/8/11 but not verified.

Undergraduate headcount enrollment	31111
Total number of sections in which the course number is less than or equal to a senior undergraduate level	1340
Average undergraduate class size	23.2

d. Average number of students per instructor

- **Ratio of FTE students to FTE instructional faculty**

Source: Budget Request information 2010-2011 as per SCHBRCRPT and Employee Salary (EMPSAL) Data System, Board of Regents, Fall 2010.

Total FTE enrollment	9004.4
FTE instructional faculty	393.65
Ratio of FTE students to FTE faculty	22.9

e. Number of non-instructional staff members in academic colleges and departments

- **Number and FTE non-instructional staff members by academic college (or school, if that is the highest level of academic organization for some units)**

Source: Employee data submitted to the Employee Salary (EMPSAL) Data System, submitted to Board of Regents in fall 2010, EEO category = "1" (Executive, Administrative, Managerial) or "3" (Other professionals, support/service) and a Primary Function not equal to "IN" (Instruction). This item reports staff members that are an integral part of an academic college or equivalent unit.

Name of College/School	Number of non-instructional staff*	FTE non-instructional staff
Applied and Natural Sciences	2	2
Liberal Arts	1	1
Business	5	4.5
Education	3	3
Engineering and Science	35	29.65
Total	46	40.15

* Of the total of 46 positions, 24 positions are funded from grant or other external sources.

f. Number and FTE of staff in administrative areas

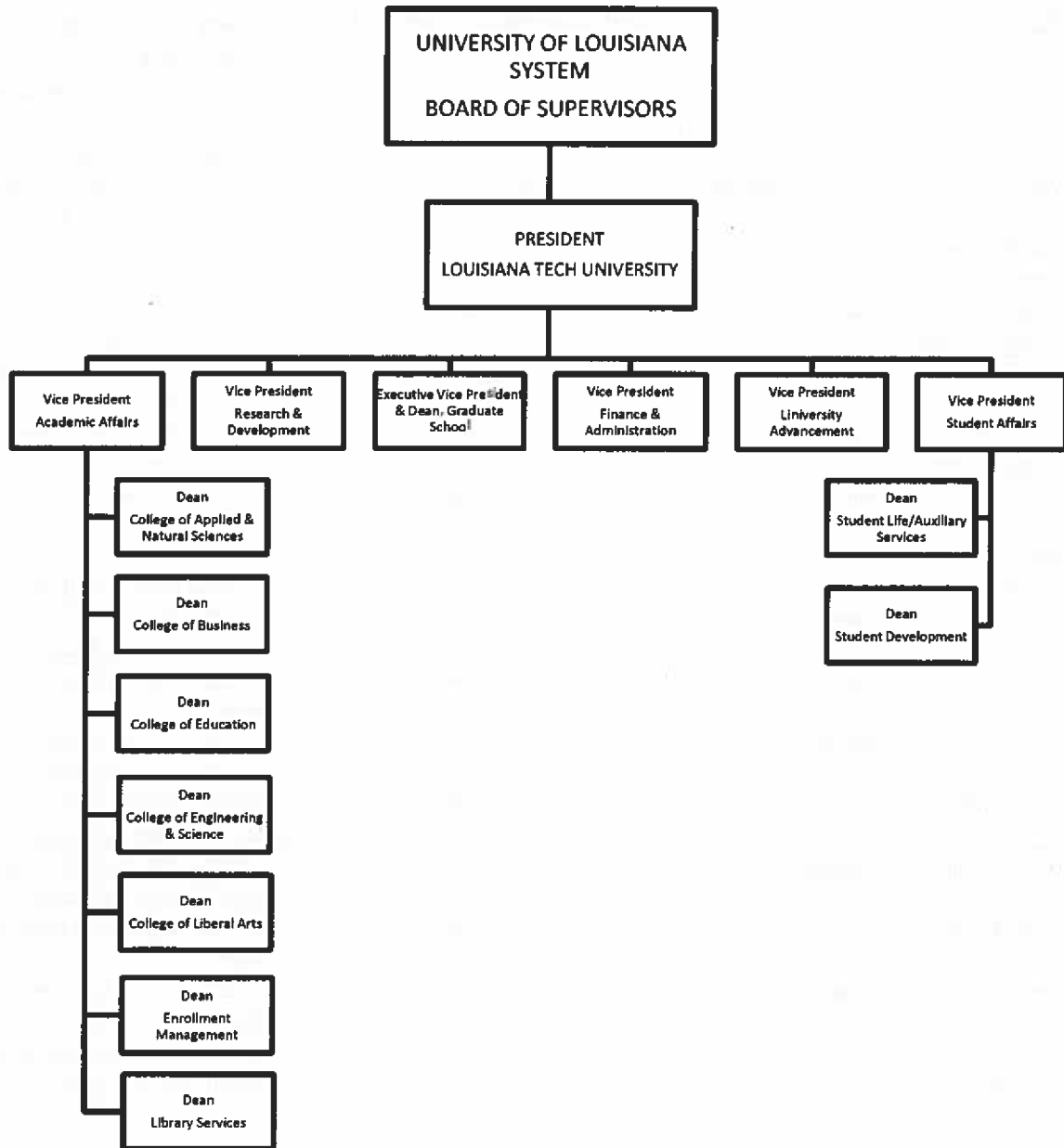
- **Number and FTE of staff as reported in areas other than the academic colleges/schools, reported by division**

Source: Employee data submitted to the Employee Salary (EMPSAL) Data System, submitted to Board of Regents in fall 2010, EEO category = "1" (Executive, Administrative, Managerial) or "3" (Other professionals, support/service) and a Primary Function not equal to "IN" (Instruction). This item reports staff members that are not an integral part of an academic college or equivalent unit, e.g. enrollment management, sponsored research, technology support, academic advising, and library services.

Name of Division	Number of staff*	FTE staff
Academic Affairs	49	49
Finance and Administration	31	29.35
Student Affairs	43	38.03
University Advancement	9	9
Athletics	53	50.95
President	9	8.5
Research and Development	14	12.75
Total	208	197.58

*Of the 208 positions in divisions (other than academic colleges), 101 are funded from external sources or self-generated dollars.

- g. Organization chart containing all departments and personnel in the institution down to the second level of the organization below the president, chancellor, or equivalent position (as of Fall 2010).



h. Salaries of all personnel identified in subparagraph (g) above and the date, amount, and type of all increases in salary received since June 30, 2008

- A chart listing the title, fall 2010 Total Base Salary, and a history of any salary changes (within the same position) since June 30, 2008.

Position	Total Base Salary, Fall 2010	Salary Changes Since 6/30/2008
President	\$350,000	7/1/08—10.48% merit increase from ULS (\$33,218) from \$316,782
Vice President for Academic Affairs	\$168,137	7/1/08—2% merit increase (\$3,297) from \$164,840
Vice President for Research and Development	\$167,892	7/1/08—2% merit increase (\$3,292) from \$164,600
Executive Vice President and Dean of the Graduate School	\$127,544	7/1/08—2% merit increase (\$2,501) from \$125,043
Vice President for Finance and Administration	\$162,690	7/1/08—2% merit increase (\$3,190) from \$159,500
Vice President for University Advancement	\$122,400	7/1/08—2% merit increase (\$2,400) from \$120,000
Vice President for Student Affairs	\$121,951	7/1/08—2% merit increase (\$2,391) from \$119,560
Dean, College of Applied and Natural Sciences	\$123,930	7/1/08—2% merit increase (\$2,430) from \$121,500
Dean, College of Business	\$173,400	7/1/08—2% merit increase (\$3,400) from \$170,000
Dean, College of Education	\$122,400	1/1/08—Appointed Dean at current salary
Dean, College of Engineering & Science	\$148,920	7/1/08—2% merit increase (\$2,920) from \$146,000
Dean, College of Liberal Arts	\$129,183	7/1/08—2% merit increase (\$2,533) from \$126,650
Dean, Enrollment Management	\$103,616	7/1/08—2% merit increase (\$2,032) from \$101,584
Dean, Library Science	\$85,000	1/1/08—Appointed Dean at current salary
Dean, Student Development	\$66,211	7/1/08—1.27% merit increase (\$820) from \$65,382
Dean, Student Life/Auxiliary Services	\$75,925	7/1/08—1.1% merit increase (\$829) from \$75,096