

2010-11 Organizational Data

**Submitted to
The Louisiana Board of Regents
In Partial fulfillment of the requirements of Act 741
Louisiana GRAD Act**

**Louisiana Delta Community College
Louisiana Community and Technical College System**

April 1, 2011

a. Number of students by classification

- **Headcount, undergraduate students and graduate/professional school students**

Undergraduate headcount	2,485
-------------------------	-------

- **Annual FTE (full-time equivalent) undergraduate and graduate/professional school students**

Undergraduate FTE	1,616.4
-------------------	---------

b. Number of instructional staff members

- **Number and FTE instructional faculty**

Total Headcount Faculty	105
FTE Faculty	78.5

- c. **Average class student-to-instructor ratio**
- **Average undergraduate class size at the institution**

Average undergraduate class size	14.2
----------------------------------	------

d. Average number of students per instructor

- **Ratio of FTE students to FTE instructional faculty**

Average number of students per instructor	20.6
---	------

- e. **Number of non-instructional staff members in academic colleges and departments**
- **Number and FTE non-instructional staff members by academic college (or school, if that is the highest level of academic organization for some units)**

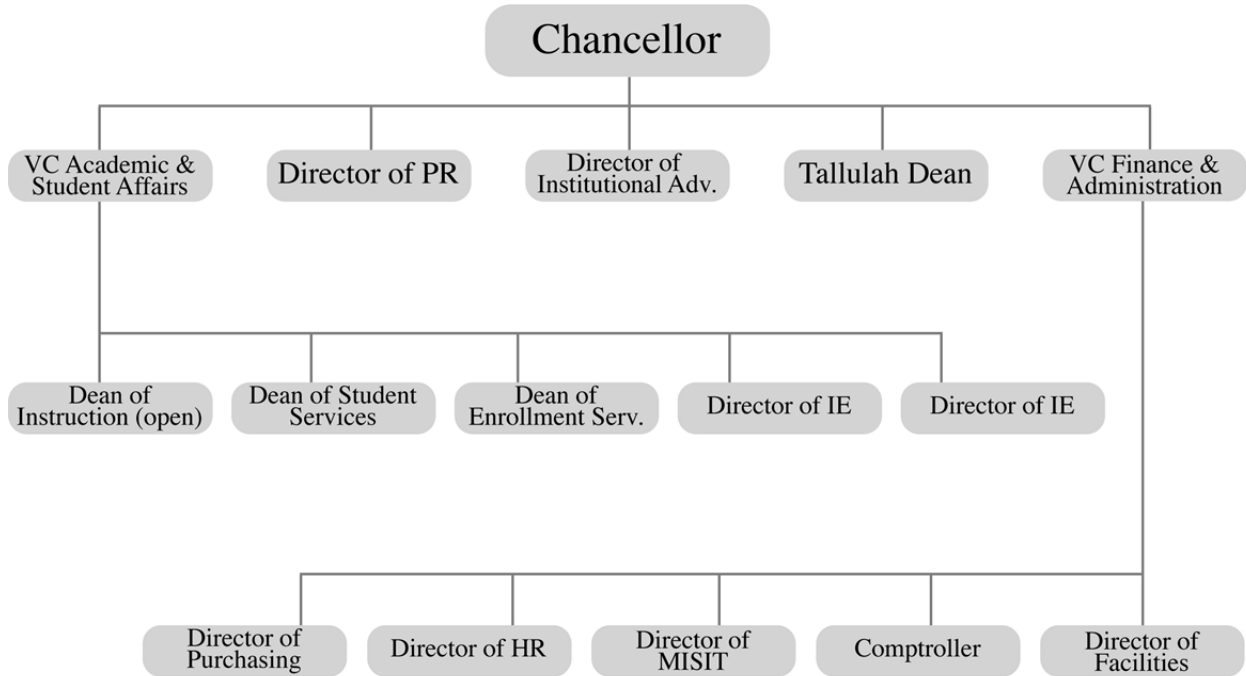
Number of non-instructional staff	FTE non-instructional staff
16	16

f. Number and FTE of staff in administrative areas

- **Number and FTE of staff as reported in areas other than the academic colleges/schools, reported by division**

Number of staff	FTE staff
16	16

- g. Organization chart containing all departments and personnel in the institution down to the second level of the organization below the president, chancellor, or equivalent position (as of Fall 2010)



h. Salaries of all personnel identified in subparagraph (g) above and the date, amount, and type of all increases in salary received since June 30, 2008

- **A chart listing the title, fall 2010 Total Base Salary, and a history of any salary changes (within the same position) since June 30, 2008.**

Position Title	Fall 2009 Base Salary	History of salary change since 6/30/2008
Chancellor	138,888	7/1/08 +9,748
VC Academic Affairs	99,018	7/1/08 +4,715
Vice Chancellor for Finance <i>(Note that in 2009 the position title was CFO)</i>	93,286	7/1/08 +4,442
Dir. of Public Relations	52,500	7/1/08 +2,500
Dir. of Human Resources	58,895	7/1/08 +2,805
Dean of Enrollment Services	61,623	7/1/08 +2,934
Dean of Student Services	67,492	7/1/08 +3,214
Dean of Instruction (Open)	79,874	7/1/08 +3,804
Dir. of Accounting	65,966	7/1/08 +2,537
Dir. of MIS/IT	54,080	12/15/08 +2,080 (Promoted from Interim)
Dir. of Inst. Effectiveness	63,000	7/1/08 +3,000
Dir of Workforce Dev.	60,375	7/1/08 +2,875
Dir of Purchasing	40,155	7/1/08 +1,545
Dir. Of Facilities	65,000	Hired July, 2010
Dir. Of Institutional Adv.	56,000	Hired July, 2010
Dean Tallulah	93,152	