

GRAD Act Section 5
Southern University at Shreveport Louisiana

5. a Number of students by classification

Institution	Fall 2009 Headcount		Total	2009-10 AY	
	Undergraduate	Graduate		Undergrad FTE	Total FTE
Southern University in Shreveport	3,014		3,014	2,394.8	2,394.8

5. b
Number of Instructional Staff Fall 2009

Institution	Instructional Faculty Headcount	Instructional Faculty FTE
Southern University in Shreveport	163	111.2

5. d
Average number of students per instructor

2009-10 FTE Enrollment per FTE instructor
21.5

5. c
Average class student-to-instructor ratio
 (average undergraduate class size)

Institution	2009-10 AY
Southern University in Shreveport	18.8

5. e
Number of Non Instructional Staff Fall 2009

Institution	Total Non-Instructional Staff State	Non-Instructional Staff FTE	Non-Instructional Staff State Funded	*Non-Instructional Staff Funded Through External Revenue Sources
Southern University in Shreveport	56	53.32	18	38

Divisional Units	Non-Instructional Staff	Non-Instructional Staff Federal FTE	Non-Instructional Staff State Funded	*Non-Instructional Staff Funded Through External Revenue Sources
Academic Affairs	14	11.99	10	4
Student Affairs	26	26.00	8	18
Workforce Development	16	15.33	0	16
Total	56	53.32	18	38

5. f
Number of Administrative Staff Fall 2009

Institution	Total Non-Instructional Staff	Non-Instructional Staff FTE	Non-Instructional Staff State Funded	*Non-Instructional Staff Funded Through External Revenue Sources
Southern University in Shreveport	56	55.33	35	21

Divisional Units	Total Non-Instructional Staff	Non-Instructional Staff Federal FTE	Non-Instructional Staff State Funded	*Non-Instructional Staff Funded Through External Revenue Sources
Chancellor	3	3.00	3	0
Academic Affairs	2	2.00	1	1
Student Affairs	7	7.00	4	3
Workforce Development	5	5.00	1	4
University Relations	8	8.00	5	3
Finance and Administration	31	30.33	21	10
Total	56	55.33	35	21

FOOTNOTE:

*External Revenue Sources would include, but not limited to, Title III, Carl Perkins, or other related intergovernmental grant awards.

GRAD Act Section 5 - SUSLA**Southern University at Shreveport Louisiana****5. h Salaries of all personnel identified**

POSITION	TOTAL BASE SALARY	TOTAL BASE SALARY	SALARY CHANGES
	FY 2008-09	FY 2009-10	STATUS
Chancellor	128,373	126,184	2,189
Vice Chancellor Academic Affairs	100,000	98,462	1,538
Assistant Vice Chancellor Academic Affairs		68,398	1,069
Dean Nursing	85,764	84,445	1,319
Vice Chancellor Finance & Administration	\$87,836	\$86,485	1,351
Vice Chancellor Student Affairs	82,000	80,738	1,262
Assistant Vice Chancellor Student Affairs		40,000	New position due to reorganization
Vice Chancellor Title III-CWD-Outreach Programs	82,000	80,738	1,262
Special Assist to the Chancellor/University Relations	60,000	59,077	923

5. Submit a report to the Board of Regents, the legislative auditor, and the legislature contain certain organizational data, including but not limited to the following:

Reporting Requirements

- a. Number of students by classification.

Fall 2009 Headcount		Total	2009-10 AY	Total FTE
Undergraduate	Graduate		Undergrad FTE	
3,014		3,014	2,394.8	2,394.8

- b. Number of instructional staff members.

Fall 2009 Instructional Faculty Headcount	Instructional Faculty Full Time
163	111.2

- c. Average class student-to-instructor ratio.

2009-10 AY
18.8

- d. Average number of students per instructor

2009-10 FTE Enrollment per FTE instructor
21.5

- e. Number of non-instructional staff members in academic colleges and departments.

Total Non-Instructional Staff State	Non-Instructional Staff FTE	Non-Instructional Staff State Funded	*Non-Instructional Staff Funded Through External Revenue Sources
56	53.32	18	38

Non-Instructional Staff	Non-Instructional Staff Federal FTE	Non-Instructional Staff State Funded	*Non-Instructional Staff Funded Through External Revenue Sources
14	11.99	10	4
26	26.00	8	18
16	15.33	0	16
56	53.32	18	38

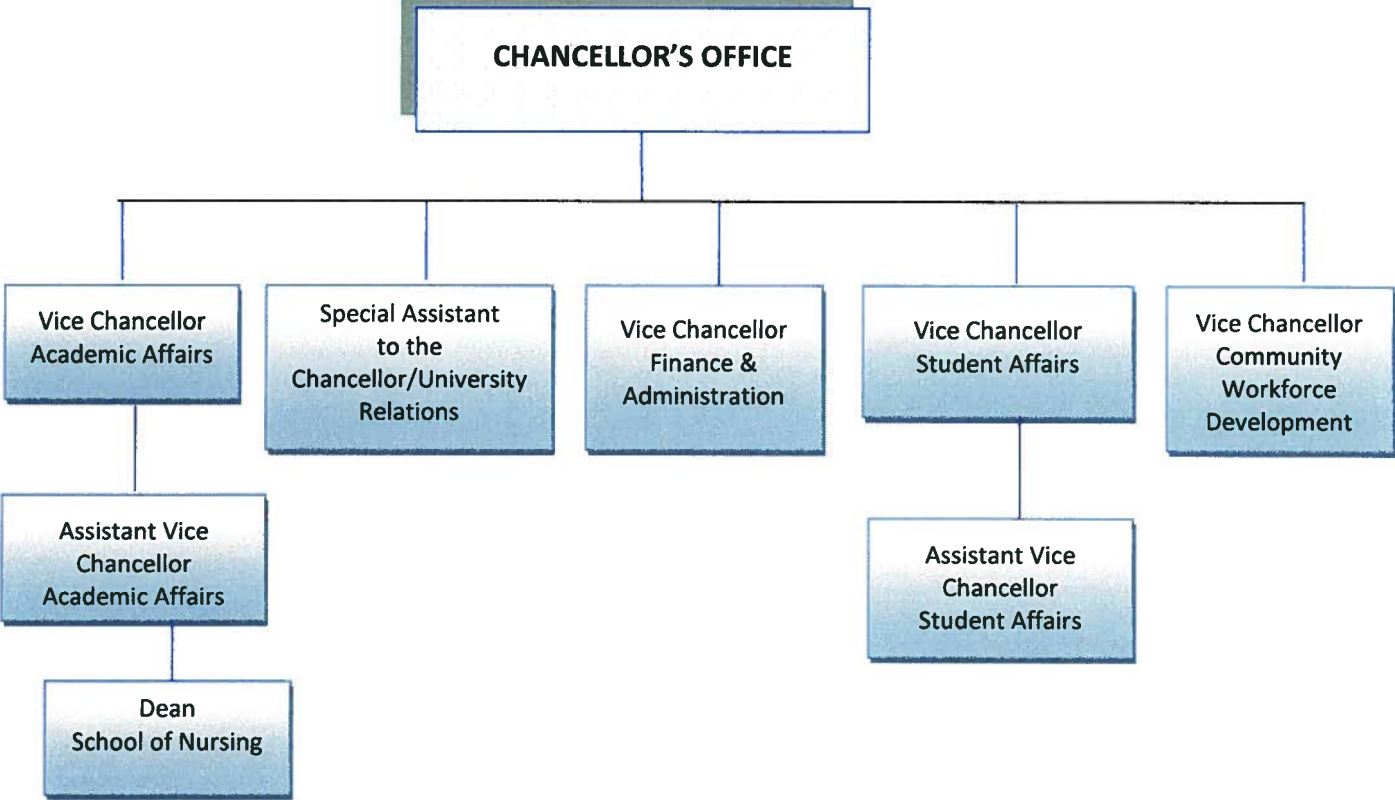
f. Number of staff in administrative areas.

Total Non-Instructional Staff	Non-Instructional Staff FTE	Non-Instructional Staff State Funded	*Non-Instructional Staff Funded Through External Revenue Sources
56	55.33	35	21

Total Non-Instructional Staff	Non-Instructional Staff Federal FTE	Non-Instructional Staff State Funded	*Non-Instructional Staff Funded Through External Revenue Sources
3	3.00	3	0
2	2.00	1	1
7	7.00	4	3
5	5.00	1	4
8	8.00	5	3
31	30.33	21	10
56	55.33	35	21

g. Organizational chart containing all departments and personnel in the institution down to the second level of the organization below the president, chancellor, or equivalent position.

ORGANIZATIONAL CHART



- h. Salaries of all personnel identified in subparagraph (g) above and the date, amount, and type of all increases in salary received since June 30, 2008. Organizational chart containing all departments and personnel in the institution down to the second level of the organization below the president, chancellor, equivalent position.**

POSITION	TOTAL BASE SALARY	TOTAL BASE SALARY	SALARY CHANGES
	FY 2008-09	FY 2009-10	STATUS
Chancellor	\$128,373	\$126,184	\$2,189
Vice Chancellor Academic Affairs	100,000	98,462	1,538
Assistant Vice Chancellor Academic Affairs		68,398	1,069
Dean Nursing	85,764	84,445	1,319
Vice Chancellor Finance & Administration	87,836	86,485	1,351
Vice Chancellor Student Affairs	82,000	80,738	1,262
Assistant Vice Chancellor Student Affairs		40,000	New position due to reorganization
Vice Chancellor Title III/Community Workforce Development/Outreach Programs	82,000	80,738	1,262
Special Assistant to the Chancellor/University Relations	60,000	59,077	923