

# **Organizational Data**

**Submitted to  
The Louisiana Board of Regents  
In Partial fulfillment of the requirements of Act 741  
Louisiana GRAD Act**

**South Louisiana Community College  
Louisiana Community and Technical College System**

**April 1, 2011**

**a. Number of students by classification**

- **Headcount, undergraduate students and graduate/professional school students**

Undergraduate headcount	4,218
-------------------------	-------

- **Annual FTE (full-time equivalent) undergraduate and graduate/professional school students**

Undergraduate FTE	2,609
-------------------	-------

**b. Number of instructional staff members**

- **Number and FTE instructional faculty**

Total Headcount Faculty	189
FTE Faculty	66.3

- c. **Average class student-to-instructor ratio**
- **Average undergraduate class size at the institution**

Average undergraduate class size	19.5
----------------------------------	------

**d. Average number of students per instructor**

- **Ratio of FTE students to FTE instructional faculty**

Average number of students per instructor	39.4
---	------

- e. **Number of non-instructional staff members in academic colleges and departments**
- **Number and FTE non-instructional staff members by academic college (or school, if that is the highest level of academic organization for some units)**

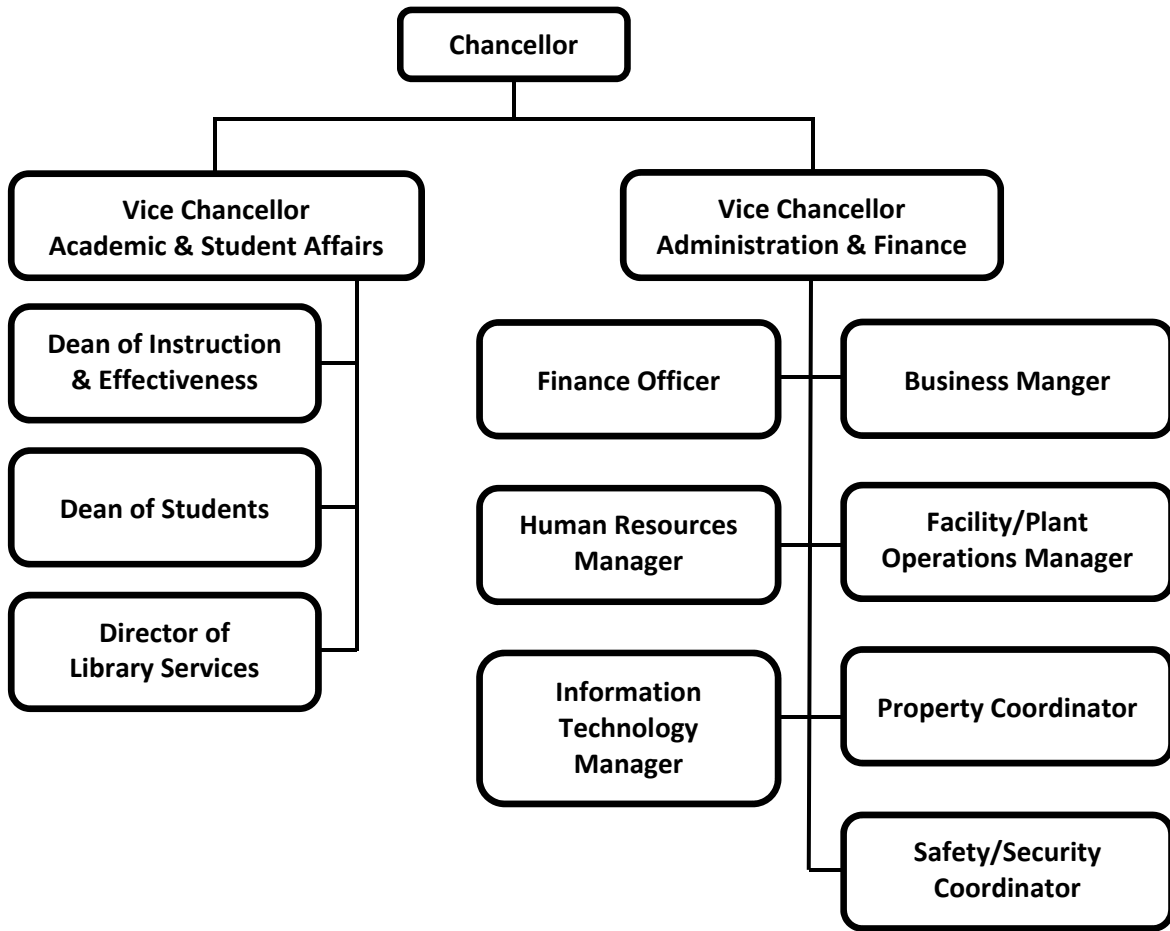
Number of non-instructional staff	FTE non-instructional staff
38	35.0

**f. Number and FTE of staff in administrative areas**

- **Number and FTE of staff as reported in areas other than the academic colleges/schools, reported by division**

Number of staff	FTE staff
3	3.0

- g. Organization chart containing all departments and personnel in the institution down to the second level of the organization below the president, chancellor, or equivalent position (as of Fall 2010)





**h. Salaries of all personnel identified in subparagraph (g) above and the date, amount, and type of all increases in salary received since June 30, 2009**

- **A chart listing the title, fall 2010 Total Base Salary, and a history of any salary changes (within the same position) since June 30, 2009.**

<b>Position Title</b>	<b>Fall 2010 Base Salary</b>	<b>History of salary change since 6/30/2009</b>
Chancellor	\$ 151,649	No salary change
Vice Chancellor Academic & Student Affairs	\$ 105,604	No salary change
Vice Chancellor Administration & Finance	\$ 105,000	April 5, 2010 New Vice Chancellor hired. Salary increased from fall 2009 base of \$97,936 given new hire's responsibilities, experience, and salary of Academic Affairs Vice Chancellor.
Dean of Instruction & Effectiveness	\$ 77,117	No salary change
Dean of Students	\$ 73,856	No salary change
Finance Officer	\$ 62,759	No salary change
Business Manager	\$ 62,583	No salary change
Director of Library Services	\$ 52,279	No salary change
Facility/Plant Operations Manager	\$ 50,656	No salary change
Human Resources Manager	\$ 50,184	No salary change
Information Technology Manager	\$ 49,700	No salary change
Property Coordinator	\$ 25,000	June 21, 2010 New hire. Position changed from Property Manager to Property Coordinator and fall 2009 base of \$48,981 reduced accordingly.
Safety/Security Coordinator	\$ 39,000	No salary change