

Organizational Data

**Submitted to
the Board of Supervisors of the
University of Louisiana System and
the Louisiana Board of Regents**

**In partial fulfillment of the requirements of Act 741
Louisiana GRAD Act**

**Southeastern Louisiana University
University of Louisiana System**

March 15, 2011

a. Number of students by classification

- **Headcount, undergraduate students and graduate/professional school students**

Source: Enrollment data submitted by the institutions to the Statewide Student Profile System (SSPS), Board of Regents summary report SSPSLoad , Fall 2010

Undergraduate headcount	13950
Graduate headcount	1401
Total headcount	15351

- **Annual FTE (full-time equivalent) undergraduate and graduate/professional school students**

Source: 2010-2011 Budget Request data submitted to Board of Regents as per SCHBRCPRT.

Undergraduate FTE	12388
Graduate FTE	999
Total FTE	13387

b. Number of instructional staff members

- **Number and FTE instructional faculty**

Source: Employee data submitted by the institutions to the Employee Salary (EMPSAL) Data System, file submitted to Board of Regents in fall 2010. Instructional faculty is determined by Primary Function = "IN" (Instruction) and EEO category = "2" (Faculty). FTE is determined utilizing the Campus Percent Effort (CPE) field.

Total Headcount Faculty	616
FTE Faculty	538

c. Average class student-to-instructor ratio

- **Average undergraduate class size at the institution**

Source: Credit hour data submitted to the Student Credit Hour (SCH) Reporting System and SPSS, Board of Regents, Fall 2010.

Undergraduate headcount enrollment	65082
Total number of sections in which the course number is less than or equal to a senior undergraduate level	2442
Average undergraduate class size	26.7

Includes Fall 2010 data submitted to BoR staff on 2/17/11 but not verified

d. **Average number of students per instructor**

- **Ratio of FTE students to FTE instructional faculty**

Source: Budget Request information 2010-2011as per SCHBRCRPT and Employee Salary (EMPSAL) Data System, Board of Regents, Fall 2010.

Total FTE enrollment	13387
FTE instructional faculty	538
Ratio of FTE students to FTE faculty	24.9

e. **Number of non-instructional staff members in academic colleges and departments**

- **Number and FTE non-instructional staff members by academic college (or school, if that is the highest level of academic organization for some units)**

Source: Employee data submitted to the Employee Salary (EMPSAL) Data System, submitted to Board of Regents in fall 2010, EEO category = "1" (Executive, Administrative, Managerial) or "3" (Other professionals, support/service) and a Primary Function not equal to "IN" (Instruction). This item reports staff members that are an integral part of an academic college or equivalent unit.

Name of College/School	Number of non-instructional staff	FTE non-instructional staff
Arts, Humanities & Social Sciences (6 depts; 3 units; 69,746 F10 SCHS)	13	12.75 (9.88 paid out of operating funds)
Business (3 depts; 22,410 F10 SCHS)	1	1
Education & Human Development (3 depts; 3 units; 15,044 F10 SCHS)	12	11.5 (4.0 paid out of operating funds)
Nursing & Health Science (3 depts; 1 units; 14,836 F10 SCHS)	6	5.24 (1.0 paid out of operating funds)
Science & Technology (4 depts; 2 units; 53,568 F10 SCHS)	8	7.8 (3.0 paid out of operating funds)

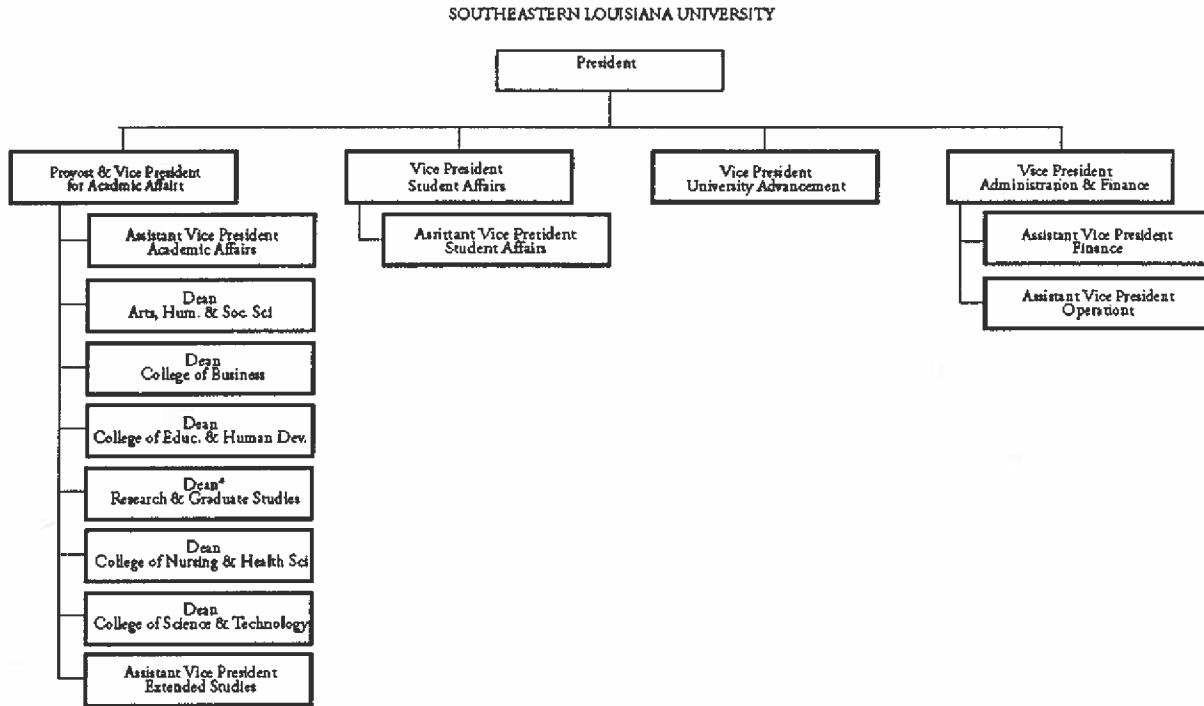
f. **Number and FTE of staff in administrative areas**

- **Number and FTE of staff as reported in areas other than the academic colleges/schools, reported by division**

Source: Employee data submitted to the Employee Salary (EMPSAL) Data System, submitted to Board of Regents in fall 2010, EEO category = "1" (Executive, Administrative, Managerial) or "3" (Other professionals, support/service) and a Primary Function not equal to "IN" (Instruction). This item reports staff members that are not an integral part of an academic college or equivalent unit, e.g. enrollment management, sponsored research, technology support, academic advising, and library services.

Name of Division	Number of staff	FTE staff
Academic Affairs	63	61.63 (49.08 paid out of operating funds)
Student Affairs	36	35.25 (24.95 paid out of operating funds)
Administration & Finance	65	65.0 (50.5 paid out of operating funds)
University Advancement	8	7.38 (6.38 paid out of operating funds)

- g. Organization chart containing all departments and personnel in the institution down to the second level of the organization below the president, chancellor, or equivalent position (as of Fall 2010).



* Position eliminated October 21, 2010

h. Salaries of all personnel identified in subparagraph (g) above and the date, amount, and type of all increases in salary received since June 30, 2008

- A chart listing the title, fall 2010 Total Base Salary, and a history of any salary changes (within the same position) since June 30, 2008.

Position	Total Base Salary, Fall 2010	Salary Changes Since 6/30/2008
President	\$248,000	<p>June 30, 2008 \$227,945</p> <hr/> <p>February 17, 2009 \$248,000 Promotion from Interim President</p>
Provost & VP Academic Affairs	\$160,325	<p>June 30, 2008 \$160,325</p> <hr/> <p>July 1, 2008 \$180,524 Merit Raise</p> <hr/> <p>July 21, 2008 \$160,325 Interim Provost appointed at lower salary</p> <hr/> <p>January 8, 2010 \$160,325 Promotion from Interim, salary remained the same</p>
Assistant VP Academic Affairs	\$113,799	<p>June 30, 2008 \$109,560</p> <hr/> <p>July 1, 2008 \$117,820 Merit Raise</p> <hr/> <p>July 1, 2009 \$113,799 Interim AVP appointed at lower salary</p> <hr/> <p>March 15, 2010 \$113,799 Promotion from Interim, salary remained the same</p>

Position	Total Base Salary, Fall 2010	Salary Changes Since 6/30/2008
Dean Arts, Humanities & Social Science	\$122,299	<p>June 30, 2008 \$122,300</p> <hr/> <p>July 1, 2008 \$131,700 Merit Raise</p> <hr/> <p>July 21, 2008 \$122,299 Interim Dean appointed at a lower salary</p>
Dean Business	\$149,650	<p>June 30, 2008 \$139,100</p> <hr/> <p>July 1, 2008 \$149,650 Merit Raise</p>
Dean Education & Human Development	\$119,299	<p>June 30, 2008 \$119,300</p> <hr/> <p>July 1, 2008 \$128,550 Merit Raise</p> <hr/> <p>July 1, 2009 \$119,299 Interim Dean appointed at a lower salary</p>
Dean Research & Graduate Studies	\$142,000 (start of Fall 2010) \$0 (effective 10/21/10)	<p>June 30, 2008 \$135,000</p> <hr/> <p>July 1, 2008 \$142,000 Merit Raise</p> <hr/> <p>October 21, 2010 Dean resigned, position eliminated, duties assigned to other staff</p>

Position	Total Base Salary, Fall 2010	Salary Changes Since 6/30/2008
Dean Nursing & Health Sciences	\$129,899	June 30, 2008 \$120,500 <hr/> July 1, 2008 \$129,899 Merit Raise <hr/> January 21, 2011 \$119,999 Interim Dean appointed at a lower salary
Dean Science & Technology	\$130,700	June 30, 2008 \$121,500 <hr/> July 1, 2008 \$130,700 Merit Raise
Assistant VP Extended Studies	\$110,000	
Vice President Student Affairs	\$132,870	June 30, 2008 \$123,600 <hr/> July 1, 2008 \$132,870 Merit Raise
Assistant VP Student Affairs	\$95,000	June 30, 2008 \$87,720 <hr/> July 1, 2008 \$95,000 Merit Raise
Vice President University Advancement	\$130,000	June 30, 2008 \$125,000 <hr/> March 27, 2009 \$130,000 New VP hired

Position	Total Base Salary, Fall 2010he	Salary Changes Since 6/30/2008
Vice President Administration & Finance	\$159,495	June 30, 2008 \$142,600 <hr/> July 1, 2008 \$159,495 Merit Raise
Assistant VP Finance	\$112,686	June 30, 2008 \$103,731 <hr/> July 1, 2008 \$112,686 Merit Raise
Assistant VP Operations	\$110,230	June 30, 2008 \$102,500 <hr/> July 1, 2008 \$110,230 Merit Raise